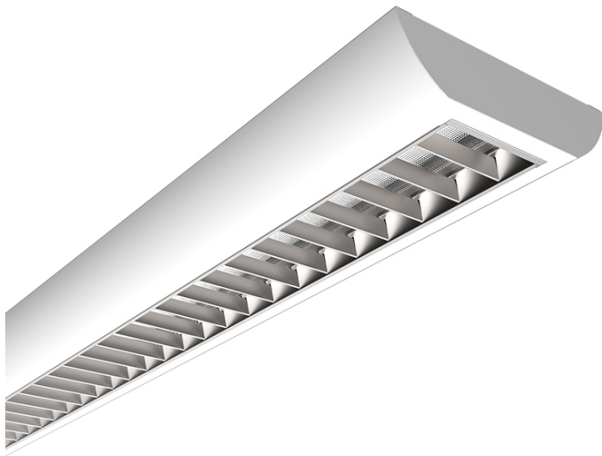




ACRESLED4

Crescent CCT Surface/Suspended Linear 21-35W



Features

High specification fully enclosed linear luminaire suitable for most commercial and educational applications

Steel powder coated body for enhanced durability

Polycarbonate diffuser and polished louvre for excellent photometric performance

Integral switches for multiple wattages and selectable CCT

CCT selectable between 3000K and 4000K

Suitable for surface mounting and suspension

Powered by Philips

General Information

IP Rating	IP20
Class Protection	1
Internal / External	Internal
Surface / Recessed / Suspended	Surface/Suspended
Lifetime (Hrs)	L70 54,000
Warranty (Years)	5
Length (mm)	1200
Width (mm)	200
Depth (mm)	55
Accessories	ASK1

Technical Information

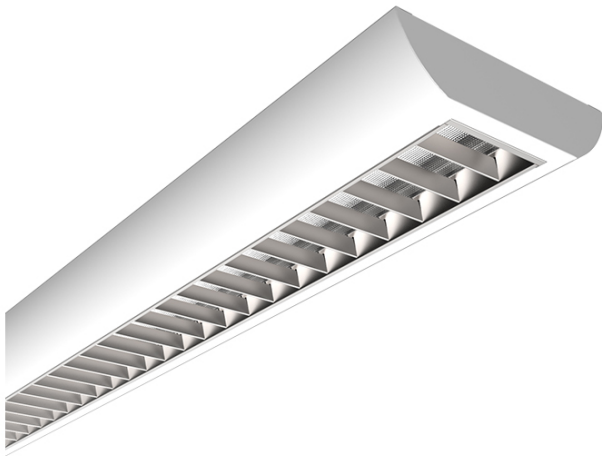
Wattage	21-35W
Lumens Delivered	3100-4900lm (4000K)
Lm/W	146-139lm (4000K)
Beam Angle	80
CRI	Ra 80
CCT	3000K/4000K
Input	220-240V
Hertz	50/60Hz
Operating Temp	-20°C to 50°C
SDCM	3
UGR	18

Datasheet generated from <https://onetimepim.com> last updated Tuesday, July 5, 2022 2:23:27 PM



ACRESLED5

Crescent CCT Surface/Suspended Linear 34-40W



Features

High specification fully enclosed linear luminaire suitable for most commercial and educational applications

Steel powder coated body for enhanced durability

Polycarbonate diffuser and polished louvre for excellent photometric performance

Integral switches for multiple wattages and selectable CCT

CCT selectable between 3000K and 4000K

Suitable for surface mounting and suspension

Powered by Philips

General Information

IP Rating	IP20
Class Protection	1
Internal / External	Internal
Surface / Recessed / Suspended	Surface/Suspended
Lifetime (Hrs)	L70 54,000
Warranty (Years)	5
Length (mm)	1500
Width (mm)	200
Depth (mm)	55
Accessories	ASK1

Technical Information

Wattage	34-40W
Lumens Delivered	4900-5600lm (4000K)
Lm/W	143-139lm (4000K)
Beam Angle	80
CRI	Ra 80
CCT	3000K/4000K
Input	220-240V
Hertz	50/60Hz
Operating Temp	-20°C to 50°C
SDCM	3
UGR	18

Datasheet generated from <https://onetimepim.com> last updated Tuesday, July 5, 2022 2:23:27 PM